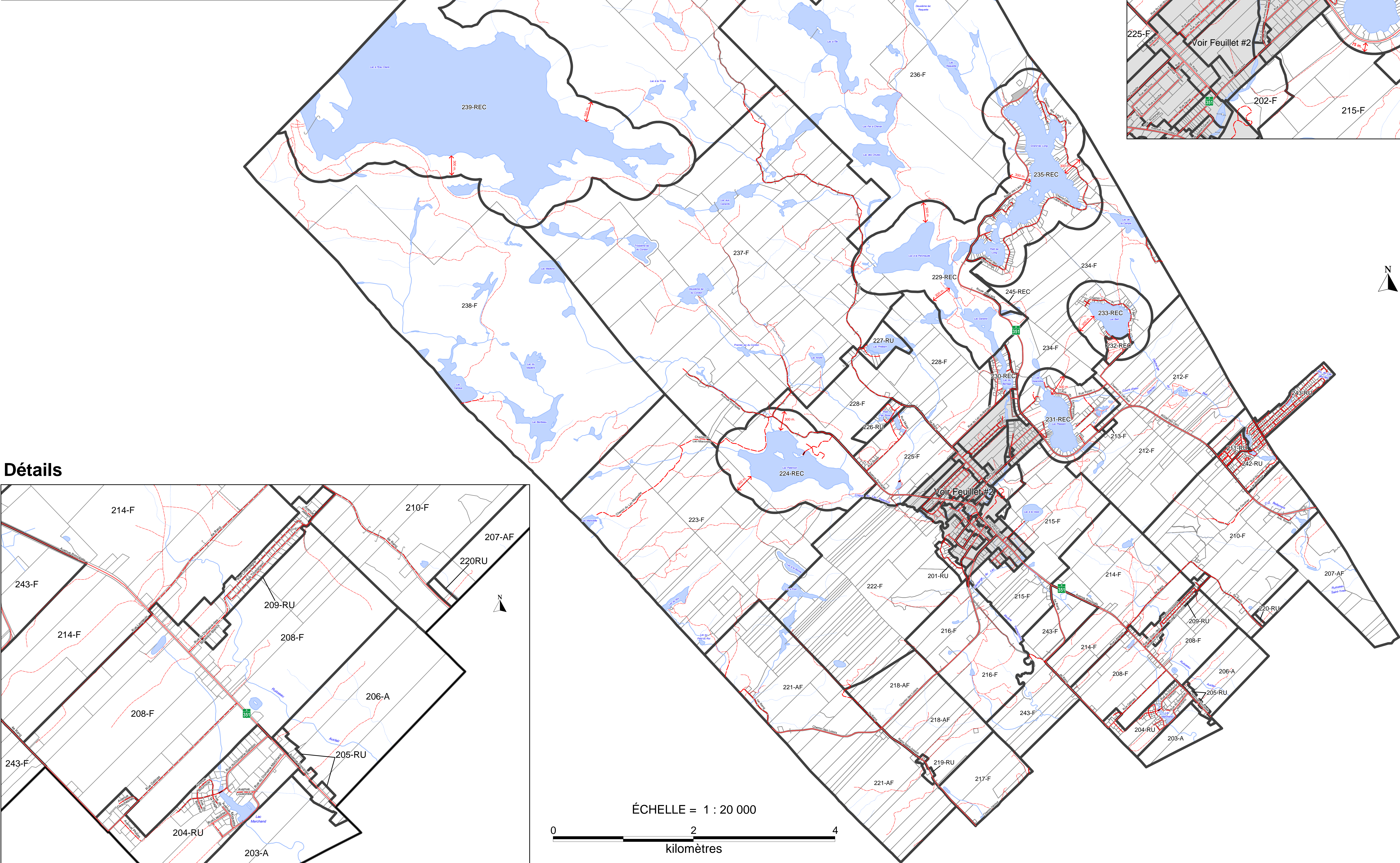


Détails

Detailed map of the intersection area showing the proposed road layout. The map includes labels for 'Rue Saint-Joseph', '218-AF', '221-AF', '219-RU', '217-F', and '218-AF'. It also features a scale bar from 0 to 300 meters and a north arrow. Red dashed lines indicate the proposed road alignment, and black solid lines show the existing road layout. Dimensions of 50 m, 60 m, and 30 m are marked along the proposed road segments.



The map displays a study area with various sites labeled. The study site is marked as 205-RU. Other sites include 203-A, 204-RU, 208-F, 209-RU, 210-F, 214-F, 243-F, 247-AF, and 220RU. The map shows a network of roads, including the A10, A101, and A102, and a river system. A scale bar indicates distances up to 800 metres, and a north arrow is present.

MUNICIPALITÉ DE SAINT-ÉLIE-DE-CAXTON

PLAN DE ZONAGE 2010-012

FEUILLET #1



—	Limite de propriété
—	Limite de zone
ZONE	FONCTION DOMINANTE
RU	Résidentielle rurale
REC	Récréative
A	Agricole
AF	Agroforestière
F	Forestière

Projection : Mercator Transverse Modifiée, fuseau 8
Système de référence géodésique : Datum nord-américain (NAD 83)

Copie certifiée conforme

Carolle Perron,
Secrétaire-trésorière

Réjean Audet,
Maire